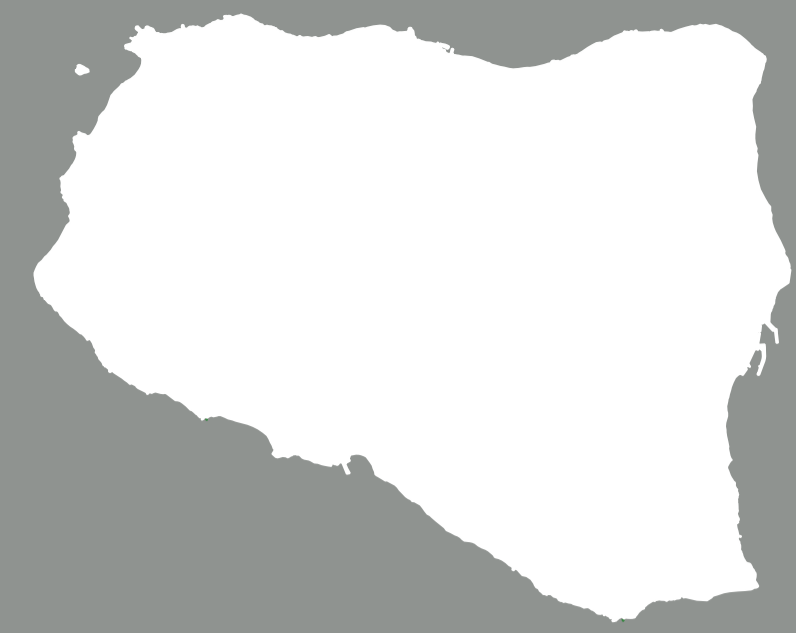


Salina

Aeolian Islands, Italy



Salina in a nutshell

The second largest of the Aeolian islands



Located off the Sicilian North-East coast
A volcanic island with high biodiversity
Declared World Heritage in 2000

Population increases by 210% during the summer



Permanent population: 2,600
Peak during the summer months: 8,000

Well connected to mainland, Calabria and Sicily



Both by boat and hydrofoil
• 70 km from Milazzo (Sicily)
• 1.5 h by hydrofoil

Tourism is the main economic activity



Although it used to be local wine
and caper production

Stakeholder mapping

Civil society

ERIC project
(Local purchasing group)

Marevivo
(Non-profit organisation for
environmental protection)

Business sector

Salina Isola Verde
(Association of hoteliers and tour operators)

Agricultural & wine company
Capper Association

Liberty Lines, Siremar, Caronte,
Italian General Navigation
(Shipping company)

Marnavi (Sea freight company)

Enel (Electricity production company)

Public sector

Municipalities:
• Santa Marina Salina
• Malfa
• Leni

Energy Dept. of Sicily region

National UNESCO Heritage
Foundation for Sicily

Consortium for
inter-municipal transport
(CITIS)

Academia

ENEA
Italian National Agency for new technologies,
energy and sustainable development

INVG
National Institute of
Geophysics and Volcanology

Department of Engineering,
Department of Agricultural,
Food and Forestry Sciences
University of Palermo

Nicola Giordano
Institute of Advanced Technologies

Energy System Description

	Final Energy Consumption in 2018 [MWh]	CO ₂ [tonne]
Electricity	8,160	3,754
Heating	2,119	497
Transport to & from	61,028	16,294
Transport on Island	13,154	3,389
Other	1,284	343
TOTAL:	85,745	24,277

Electricity

Non-interconnected

Primary energy consumption in 2018: **26,322 MWh**

2 Diesel power plants:

- Santa Marina Salina 5.1 MW
- Malfa 3.1 MW

Heating

Households' heating and hot water is mostly
generated with LPG

Renewable heating has been recently installed:

- 14 m² of solar thermal
- 17 kW biomass heating (pellets)

Transport on the island

5 Public transport minibuses

1,300 Private vehicles that consist mostly of
cars and motorcycles powered by gasoline

Transport to and from the island

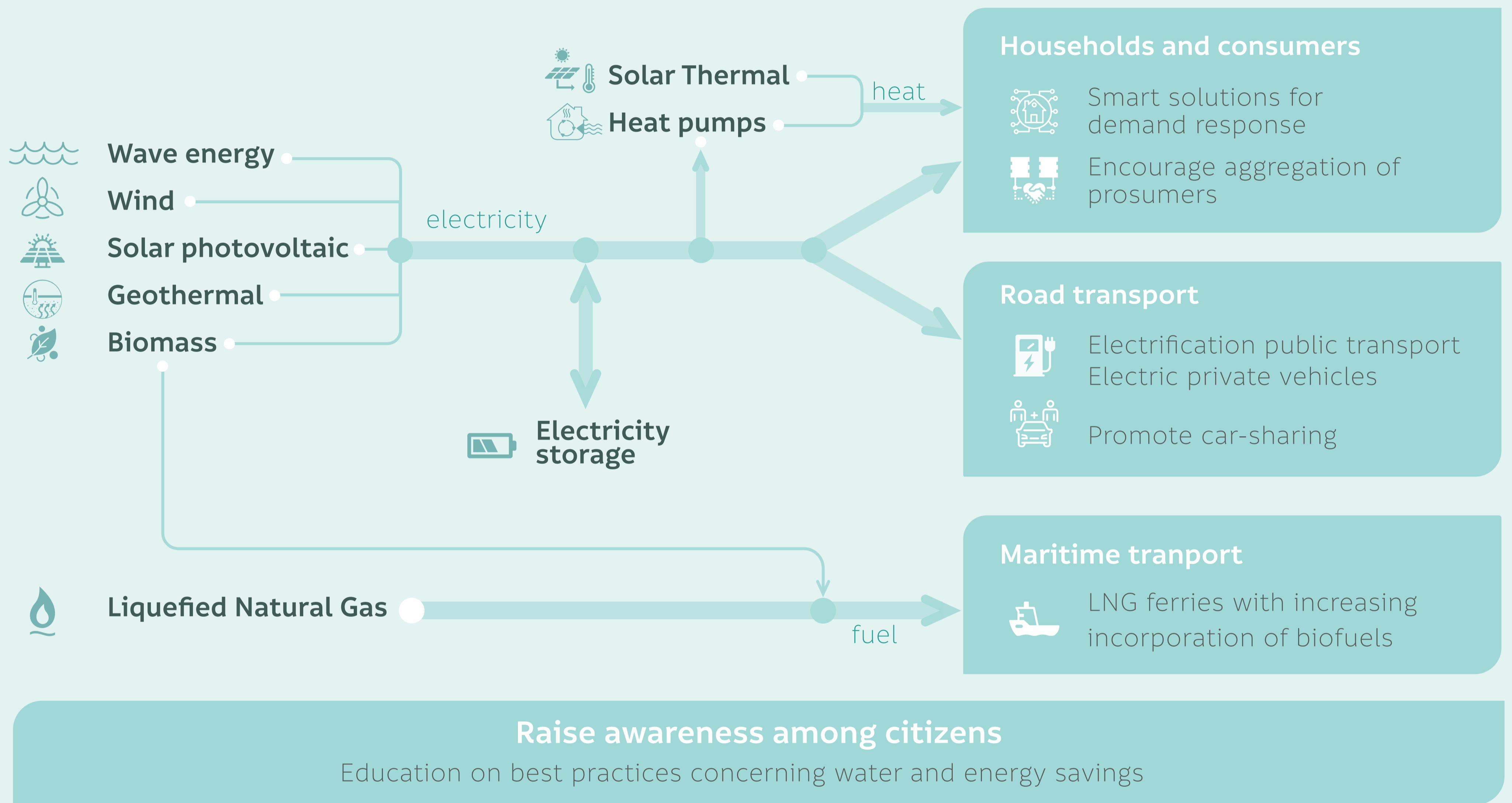
Hydrofoils and ferries
are powered by diesel engines

Fresh water is transported by tankers,
representing 5% of the energy consumed to
and from the island

Vision

Salina is a sustainable island with an energy generation system based on renewables. Transport is decarbonised and all buildings are energy efficient. The local community uses resources efficiently and the island's natural features are respected.

Transition pathways



Transition governance

